

Press Release

Reprint free of charge. Press-cutting requested.



Traditional material now used in modern building envelopes

More design options thanks to metal shingles

Whether it concerns solutions for façades or roof coverings - architects and planners have for years now been using metal – a tried-and-tested material. Nowadays, this traditional material is used mainly where innovative and modern building claddings are called for: because a building that has been clad with metal shingles ends up looking rather special and elegant. It is this particular combination of traditional craftsmanship and innovative shaping that also characterises the Classic Shingle range from Boehme Systems.

Roofs and façades have to withstand all sorts of weather impacts over many years. In this respect in particular the traditional building material metal scores highly, due to it being very robust and because it has a high load capacity. Furthermore, the fact that it can be easily moulded means that even shapes that are rather outlandish can be realised. A feature, which in terms of design freedom, is rapidly gaining in importance. Because modern building claddings not only need to be functional, they also have to look really attractive. Based on these advantages offered by the material, Boehme Systems has been using metal extensively over recent years and has steadily expanded its metal-based product portfolio. In the Classic Shingle range planners and architects now have a huge assortment of colours and shapes at their disposal, fulfilling almost any design requirement there is. Different options for the substructure, as well as special clips for easy fastening, ensure that the shingle itself does not need to be encumbered with holes for screws or other fixing mechanisms – common areas for potential water ingress – are thus being eliminated. Production and workmanship result in the metal shingle being a sustainable and cost-effective product that produces a lasting building envelope.

Approx. 1,800 characters

About Boehme Systems:

Boehme Systems Vertriebs GmbH specialises in the development, manufacture and supply of innovative building claddings made from metal. The company sees itself as a system provider who develops solutions for facades and roofs that make architectural and economic sense, giving due consideration to all important surrounding factors. The products are manufactured in the company's own production facilities which are equipped with state-of-the-art technologies. In addition to standardized solutions from its extensive product portfolio, Boehme Systems repeatedly develops individual solutions that offer architects and tradesmen a maximum degree of design freedom. A team of master tradesmen, fitting instructors, engineers and technicians ensure competent advice and service – from planning to execution.

Note:

This press release can also be downloaded at www.boehme-systems.com and www.Kommunikation2B.de.

Captions:



[13-24 Design_Freedom]

Thanks to being easily mouldable, even quite eccentric shapes can be realised with the material metal.

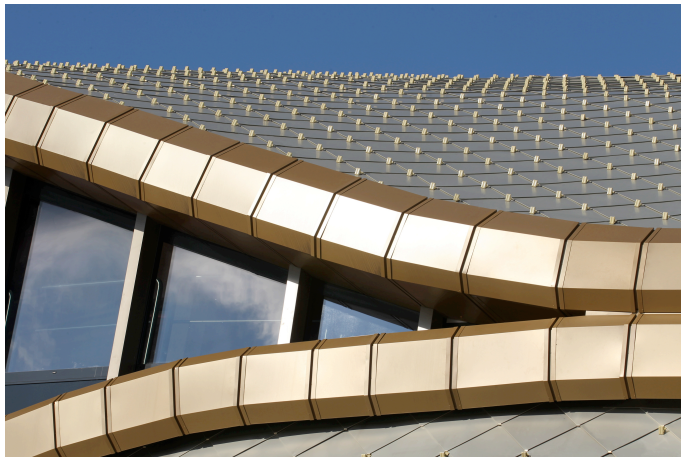
Image: Boehme Systems Vertriebs GmbH



[13-24 Classic_Shingles]

Combining traditional craftsmanship and modern shapes – the Classic Shingle product range from Boehme Systems.

Image: Boehme Systems Vertriebs GmbH



[13-24 Look]

Metal shingles in various shapes and colours produce unique building envelopes.

Image: Boehme Systems Vertriebs GmbH

If you have any queries please contact:

BOEHME® SYSTEMS Vertriebs GmbH
 Rafael Hein
 Head of Marketing
 Tel: +49 351 653 76 666
 Email: presse@boehme-systems.com

Kommunikation2B
 Mareike Quassowski | Andre Wand | GbR
 Andre Wand
 Tel: +49 231 530 70 411
 Email: a.wand@kommunikation2b.de